



**Keystone
Environmental**
Knowledge-Driven Results

CORPORATE BROCHURE

Project No. 354 / February 2022

Lorem ipsum dolor sit amet, consectetur adipiscing elit, sed diam nonummy nibh euismod tincidunt ut laoreet dolore magna aliquam.

Ut wisi enim ad minim veniam, quis nostrud exerci tation ullam corper-suscipit lobortis nisl ut aliquip.



Keystone Environmental

Knowledge-Driven Results

CORPORATE BROCHURE

Project No. 354 / February 2022

Lorem ipsum dolor sit amet, consectetur adipiscing elit, sed diam nonummy nibh euismod tincidunt ut laoreet dolore magna aliquam.

Ut wisi enim ad minim veniam, quis nostrud exerci tation ullam corper-suscipit lobortis nisl ut aliquip.



ABOUT US

KNOWLEDGE-DRIVEN RESULTS

Keystone Environmental Ltd. was established in 1988 following the completion of the human health risk assessment for one of Vancouver's most enviable tracts of developable land (EXPO 86). In the last 30 years, we have grown to become a full service environmental consultancy of 90+ staff, taking pride in working closely with clients to understand their project objectives, being responsive to project timelines and budgets, and working to achieve client satisfaction. We have been, and continue to be, the environmental consultant on some of British Columbia's largest and most important projects.

Keystone Environmental Ltd. specializes in Environmental Engineering, Environmental permitting, monitoring and rehabilitation and Contaminated Sites. Our Vision reflects a dedication to the environmental profession and to our client's expectations. Our Values reflect what we work towards achieving through a culture of innovation and by providing lasting value to all clients and stakeholders.

Our staff includes professional engineers, geo-scientists, toxicologists, biologists, agrologists and environmental scientists. Keystone Environmental's commitment to prompt, personal and high-quality service and providing environmental solutions designed to make our clients more successful, has resulted in steady growth. We tailor our services to the individual needs of each client whether they may be environmental managers, property developers, plant managers, government agencies or professionals.

EMPLOYEES

- 90+ Strong
- 8 - Approved Professionals
- 21 - Professional Engineers (P. Eng)
- 3 - Professional Geologists (P. Geo)
- 8 - Professional Agrologists (P. Ag)
- 7 - Environmental Professionals (E.P.)
- 11 - Registered Professional Biologists (RP. Bio)

Business Philosophy

Client Driven & Solutions-Oriented

Environmental site assessment projects promote progress by resolving environmental issues effecting property development, sales, acquisition, leasing, financing or decommissioning. Site assessments can include baseline studies, hydro-geological characterization, impact assessment and risk management, each focused on cost-effective mitigation strategies.

Projects have included mine sites, railways, fuel facilities, airports, plywood, particle board, sawmills, shipyards, coal tar, wood preservation, chemical refineries and metal processing plants. Our environmental management and compliance programs are designed to support industrial operations and maintenance.





Keystone Environmental CONSULTING SERVICES

BIOLOGY

CONTAMINATED SITES

ENGINEERING

INDOOR AIR QUALITY

HEALTH & SAFETY

Health and Safety (H&S) management is our first priority at Keystone Environmental. We place the health and safety of our staff, our subcontractors, clients, site workers and the public above all else.

Every project has a project specific health and safety plan and at the start of every project, and the start of every day, a tailgate health and safety review is conducted to ensure all incidents, potential issues and near misses have been reported and effectively dealt with.



PRINCIPAL FIELDS

Keystone Environmental's principal fields of professional services include all aspects of contaminated sites assessment and remediation, environmental engineering and biological services. Our staff specialize in environmental monitoring, regulatory permitting and applications, environmental assessments including habitat assessments, investigation and management of contaminated sites, human health and ecological risk assessment (HHERA), remediation planning/engineering design, preparation and execution of mitigation strategies, and habitat compensation plans.

OUR CORE VALUES

FAIRNESS

We are committed to being fair in all of our interactions with clients, suppliers, employees and external stakeholders. We continually strive for win/win solutions in order to meet the needs of all involved.

INTEGRITY

We are committed to being honest and forthright in interactions with clients, suppliers, other external stakeholders and fellow employees. We fulfill our commitments to each other & to third parties and are committed to acting with integrity in everything we do.

RESPECT

We believe that everyone should be treated with respect regardless of title and/or position and we are committed to doing so.

SUSTAINABILITY

We are committed to sustainability to both the environment and to our organization's long-term success.

TEAMWORK

We believe in a work environment that is characterized by open communication, teamwork, mutual respect and trust. We also believe that every employee's opinion counts and that all of us should participate directly in the success of the company.



Focusing on people and performance, we are the go-to environmental consulting firm.



SUSTAINABILITY & ENVIRONMENTAL AWARENESS

Keystone Environmental defines sustainability as desired outcomes influenced by lifecycle choices and the benefits (social, economic and environmental) bestowed upon the community and future generations.

ENVIRONMENTAL

Keystone Environmental has taken steps to minimize our impact on the environment:

- ▶ *Providing staff with opportunities to telecommute.*
- ▶ *Offering flexible work hours.*
- ▶ *Office paper and container reuse/recycling program.*
- ▶ *Use of electronic communications to replace paper copies (client permitting).*

Our clients note that Keystone Environmental uses its knowledge, influence and creativity to assist with solutions, negotiate with regulators and liaise with the community to find mutually successful and rewarding solutions that are the essence of sustainable development. We have tried to reflect these in our project descriptions. Our every action is for sustainable remediation, solutions and actions in our work.

ECONOMIC

Keystone Environmental's outlook on the economic aspect of sustainability is fronted by the principles that economic growth is only sustainable if it simultaneously improves our quality of life and the environment. To meet the tenets of this principle, we invest in our staff (training and career growth), our market and our operating procedures.

We work within and contribute to social causes, maintain a competitive balance in providing clients value and we ensure our work exceeds customer expectations. Keystone Environmental's actions are supported by our corporate values termed FIRST - Fairness, Integrity, Respect, Sustainability and Teamwork.

SOCIAL

Keystone Environmental takes action on many fronts to fulfill its corporate responsibility role.

Providing direct corporate support through donations and volunteering for:

Vancouver's Union Gospel Mission - feeding and caring for 800 homeless people.

Cassie + Friends - transforming the lives of kids & families living with Juvenile Arthritis and other rheumatic diseases.

Backpack Buddies - filling the weekend hunger gap of children in Metro Vancouver.



Keystone Environmental

ENGINEERING

Keystone Environmental's professional engineering team brings expertise in wastewater treatment, stormwater management and treatment, landfill design and management, contaminated sites remediation systems design and management, fuelling facility compliance, ESC Plans, NPRI and GHG compliance. While many projects seem similar on the surface, client objectives and end game are the key driver in scoping services.

Not every issue requiring an engineering solution fits into a neat category. That is where our engineers excel. Whether you need to treat your discharges to meet toxicity tests, need disposal options for woodwaste, need to secure hazardous materials in place, need a solution for salt contamination or need an aesthetic constructed wetland design, we can solve the problem!

› Wastewater Engineering

Our engineering team tackles wastewater projects ranging from system assessment and operating manuals, through minor capital upgrades to detailed design and construction oversight of new treatment plants. Keystone Environmental has designed and constructed wastewater treatment plants across Canada; at rail yards, industrial maintenance shops, hazardous waste management yards, and for landfill leachate.

We also have a team of operators to oversee the operation of wastewater treatment plants for many clients. With solutions, negotiate with regulators and liaise with the community to find mutually successful and rewarding solutions that are the essence of sustainable development. We have tried to reflect these in our project descriptions. Our every action is for sustainable remediation, solutions and actions in our work.

› Emergency Spill Response Planning

Emergency spill response plans identify the risks and hazards, the potential areas where spills may occur, and what steps need to be followed if a spill does occur, enabling the development of spill prevention plans and procedures.

› Storm Water Management

Our storm water management engineering specialists have developed city-wide storm water and watershed monitoring frameworks and comprehensive storm water management plans for major industrial facilities. These plans ensure that surface runoff, storm, and water leaving the property are in compliance with applicable federal, provincial and municipal laws and regulations.

› National Pollution Release Inventory

The National Pollution Release Inventory (NPRI) must be completed and filed by emitters every year. Our engineering team ensures accuracy of reporting, avoiding assumptions that do not reflect what is happening, and provide consistency among multiple operations of a single client.

› Erosion & Sediment Control (ESC) Design

Today nearly every construction site must manage erosion and sediment in their stormwater runoff. Keystone Environmental's engineering team evaluates site-specific requirements and provides detailed designs for erosion and sediment control works.

KEY ENGINEERING STAFF

RICHARD JOHNS **P.Eng., M.Sc.**

Department Head

As a senior engineer with over 18 years experience in environmental consulting, Richard has designed innovative solutions that account for environmental, social and economical factors and achieve clients objectives. He provides senior technical review and consultation for remedial option evaluations, process design, tenders, bid process and system installation.

JASON CHRISTENSEN **P.Eng., CSAP**

Senior Engineer

Jason has more than 18 years of experience in the environmental field and provides engineering expertise in contaminated sites remediation, environmental engineering and wastewater treatment. He is the senior technical reviewer and manager for projects that entail remediation option evaluation, remediation plan preparation, remediation system design, wastewater treatment design and operation, and permitting.



➤ Wastewater Engineering

Our engineering team tackles wastewater projects ranging from system assessment and operating manuals, through minor capital upgrades to detailed design and construction oversight of new treatment plants. Keystone Environmental has designed and constructed wastewater treatment plants across Canada; at rail yards, industrial maintenance shops, hazardous waste management yards, and for landfill leachate.

➤ Emergency Spill Response Planning

Emergency spill response plans identify the risks and hazards, the potential areas where spills may occur, and what steps need to be followed if a spill does occur, enabling the development of spill prevention plans and procedures.

➤ Storm Water Management

Our storm water management engineering specialists have developed city-wide storm water and watershed monitoring frameworks and comprehensive storm water management plans for major industrial facilities. These plans ensure that surface runoff, storm, and water leaving the property are in compliance with applicable federal, provincial and municipal laws and regulations.

➤ National Pollution Release Inventory

The National Pollution Release Inventory (NPRI) must be completed and filed by emitters every year. Our engineering team ensures accuracy of reporting, avoiding assumptions that do not reflect what is happening, and provide consistency among multiple operations of a single client.

➤ Erosion & Sediment Control (ESC) Design

Today nearly every construction site must manage erosion and sediment in their stormwater runoff. Keystone Environmental's engineering team evaluates site-specific requirements and provides detailed designs for erosion and sediment control works.

KEY ENGINEERING STAFF

RICHARD JOHNS **P.Eng., M.Sc.**

Department Head

As a senior engineer with over 18 years experience in environmental consulting, Richard has designed innovative solutions that account for environmental, social and economical factors and achieve clients objectives. He provides senior technical review and consultation for remedial option evaluations, process design, tenders, bid process and system installation.

JASON CHRISTENSEN **P.Eng., CSAP**

Senior Engineer

Jason has more than 18 years of experience in the environmental field and provides engineering expertise in contaminated sites remediation, environmental engineering and wastewater treatment. He is the senior technical reviewer and manager for projects that entail remediation option evaluation, remediation plan preparation, remediation system design, wastewater treatment design and operation, and permitting.

PROJECT REVIEW

PATTULLO BRIDGE REPLACEMENT

Type: Constructing Monitoring, Surveys, and Salvages

LOCATION

The Pattullo Bridge crosses the Fraser River and links the city of New Westminster to the city of Surrey in BC.

CLIENT

Fraser Crossing Partners (FCP)

Reference Contact:
Mr. Brennan Finley

REQUIREMENTS

- › Marine mammal monitoring.
- › Fish monitoring, including sturgeon, during scour protection and pile driving works via side scan sonar.
- › Acoustic monitoring using a hydrophone, for the protection of fish and marine mammals.
- › Wildlife salvages (amphibians and fish) prior to ditch alterations.
- › Bird nest surveys prior to vegetation removal.
- › Rare, invasive, and culturally significant plant surveys.
- › Air quality measurements.

KEYSTONE CONTACT

Jamie Slogan, R.P.Bio
Project Manager & Coordinator

DESCRIPTION

Fraser Crossing Partners is pursuing the replacement of the Pattullo Bridge by building a replacement and tearing down the previous Pattullo Bridge. Once complete, the replacement Pattullo Bridge will span the Fraser River and link the city of New Westminster to the city of Surrey.

At the early stages of the Project, Keystone Environmental has, and continues, to prepare construction monitoring reports based on the various field work activities performed on-Site.

The relocation of this section of the Creek provides an opportunity to enhance instream and riparian salmonid, resulting in a net benefit to fish habitat. Field monitoring and salvages provides protection to both aquatic and terrestrial species that otherwise may have been negatively impacted by development.

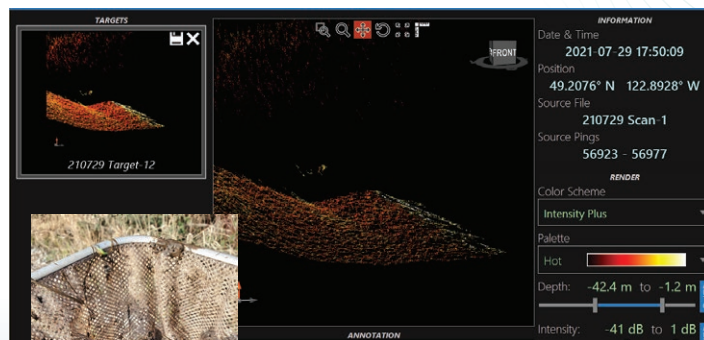


Figure 2: Habitat Revitalization

ABOUT US

Our staff, including professional engineers, geo-scientists, toxicologists and environmental scientists, commit to prompt, personal and high-quality service and providing environmental solutions designed to make our clients more successful.

OUR MISSION

We are client driven and solution-oriented, our mission is to integrate pollution prevention and control strategies to achieve regulatory compliance and to promote progress by resolving environmental issues effecting your business.

Contact Us:

(604) 430-0671

keyinfo@keystoneenvironmental.ca

Corporate Office Address:

320-4400 Dominion Street
Burnaby, BC V5G 4G3

Office Hours:

Monday to Friday: 8 am - 5 pm

Follow Us:



MORE INFO

HEADING GOES HERE

Lorem ipsum dolor sit amet, consectetur adipiscing elit, sed do eiusmod tempor incididunt ut labore et dolore magna aliqua. Ut enim ad minim veniam, quis nostrud exercitation ullamco laboris nisi ut aliquip ex ea commodo consequat.

Duis aute irure dolor in reprehenderit in voluptate velit esse cillum dolore eu fugiat nulla pariatur. Excepteur sint occaecat cupidatat non proident, sunt in culpa qui officia deserunt mollit anim id est laborum.

NOTES:
